

North American Grouse Partnership: Twenty Years of Grouse Conservation

Jon Haufler and Steve Belinda

North American Grouse Partnership

Mission

- The mission of the North American Grouse Partnership is to promote the conservation of grouse and the habitats necessary for their survival and reproduction



Formation

- Founded on August 25, 1999 in Tom Cade's home
- NAGP advocates for *all 12 North American grouse species* and their habitats
- Key areas: science, policy, management, and outreach
- “The role of the NAGP is to raise the profile of grouse on a national and international level, to provide sound species management guidelines and recommendations or to support those already developed, to educate and give the public an avenue for involvement, and to raise funds to accomplish goals.” (Sherrod 2000)

- [Sage Grouse](#)
- [Greater Sage-grouse](#)
- [Gunnison Sage-grouse](#)
- [Prairie Grouse](#)
- [Sharp-tailed Grouse](#)
 - Alaska sharp-tailed grouse
 - Columbian sharp-tailed grouse
 - Northwestern sharp-tailed grouse
 - Northern sharp-tailed grouse
 - Plains sharp-tailed grouse
 - Prairie sharp-tailed grouse
- [Greater Prairie-chicken](#)
 - Attwater's
 - Heath Hen (extinct)
- [Lesser Prairie-chicken](#)
- [Forest Grouse](#)
- [Spruce Grouse](#)
- [Ruffed Grouse](#)
- [Dusky Grouse](#)
- [Sooty Grouse](#)
- [Ptarmigan](#)
- [Rock Ptarmigan](#)
- [Willow Ptarmigan](#)
- [White-tailed Ptarmigan](#)



Science

- Established Council of Scientists to provide information on current knowledge
- Sponsor and presenters at PGTC and SG and Columbia STG Working Group meetings
- Convener and presenters at NA Wildlife Conferences
- Conducted technical reviews for state and federal agencies



NAGP COS

- Cam Aldridge, Rick Baydack, Brian Cade, Dawn Davis, Dave Haukos, Rick Hoffman, Matt Holloran, Dan Keppie, Stephanie Manes, Angelena Ross, Alan Sands, Mike Schroeder, Nova Silvy, and Bill Vodehnal.

Policy Work

Established Policy Council to
provide NAGP with guidance

Farm Bill Input for Grouse (2002,
2008, 2014, 2018)

Testimony to Congress

Expert input to proposed listing
decisions

Comments on numerous policy
proposals and proposed legislation



Management Work

- Developed Grassland Conservation Plan for Prairie Grouse
- Developed BMP's for grouse during energy development
- Provided input to state sage-grouse plans
- Conducted assessment of lesser prairie-chicken status
- Assisted in formation and coordination of IWG's for sharp-tailed grouse and greater prairie-chicken
- Technical input to numerous state and federal management plans



Seth Barrioz photo

Outreach

- Publish Grouse Partners News, newsletters and web info
- Contribute to Upland Almanac and other publications
- Develop informational brochures
- Sponsor prairie-chicken festivals
- Presentations to professional and public audiences
- Exhibitor at meetings



GROUSE PARTNERSHIP NEWS

20th Anniversary Edition – Fall 2019



Partnerships

- Established Prairie Grouse Partners (NAGP, PF, MDF, EMRI, TRCP, ABC)
- Active member of AFWA Resident Game Bird Committee
- Charter member of American Wildlife Conservation Partners
- Member of TRCP Policy Council



Primary Focus Areas

- Policy input (Farm Bill, legislation, etc.)
- Sage-grouse management
- Prairie Grouse focus
 - IWG's for GPC and STG
 - LPC management





Scott Yeats Photo

A Questionable Practice:

Augmenting Greater Sage Grouse Populations Through Captive Breeding

The North American Grouse Partnership (NAGP) does not support nor does it believe that captive rearing and augmentation of sage-grouse is a viable tool for the management of wild sage-grouse populations *at this time*.

We also do not believe the release of captive reared grouse is mitigation for impacts to wild grouse habitats and populations and therefore it should not be used as such by federal or state agencies.

NAGP recognizes the authority of state fish and wildlife agencies to oversee the management of sage-grouse populations and the importance of developing tools for sage-grouse conservation. However, we recommend extreme caution should be used by states that allow captive rearing of sage-grouse for gamebird farming/hunting operations and that those operations should have strict oversight by state wildlife agencies.

Releasing sage-grouse into areas without the necessary habitat to support them clearly has little chance of accomplishing anything useful relative to conservation of sage-grouse populations.

Any sage-grouse held in captivity must retain as much of their natural instincts as possible

so they have the best chance of survival when reintroduced into the wild.

We support efforts to improve techniques and methods to improve captive rearing as a management tool under limited controlled conditions.

The NAGP does not support captive rearing of sage-grouse because:

- There is a very low likelihood of survival of released birds
- There is a risk of disease transmission to wild populations
- There is a lack of scientific evidence and techniques for viable operations to rear birds ready for release into the wild
- There are no benefits or mitigation for loss/destruction of habitats
- It creates a false sense of security for the conservation of sage-grouse populations
- It shifts the focus from maintaining/restoring needed habitat to captive breeding

The primary emphasis of sage-grouse conservation should continue to be the management of habitat for sustainable wild sage-grouse populations.

www.grousepartners.org

Our mission is to promote the conservation of grouse and the habitats necessary for their survival and reproduction.





LESSER PRAIRIE-CHICKEN CONSERVATION ASSESSMENT

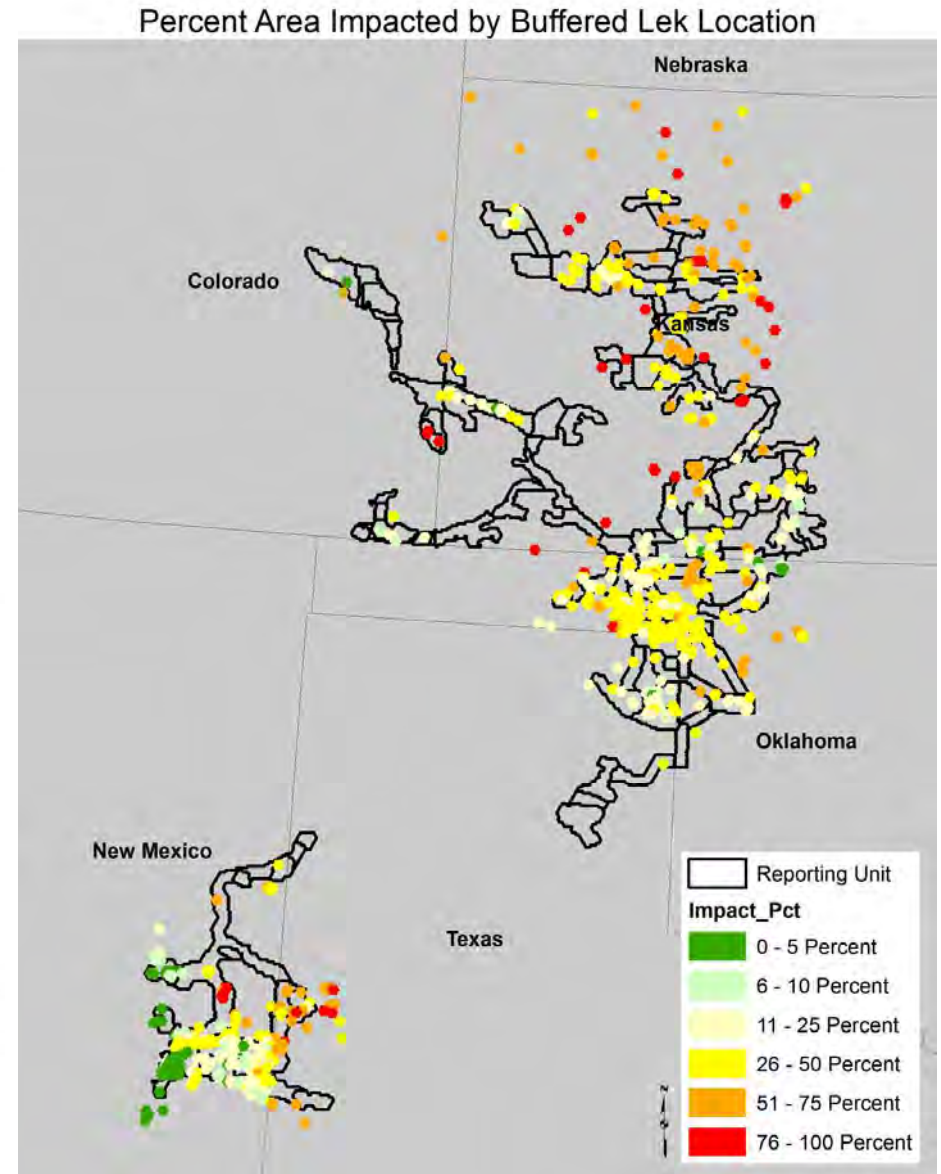
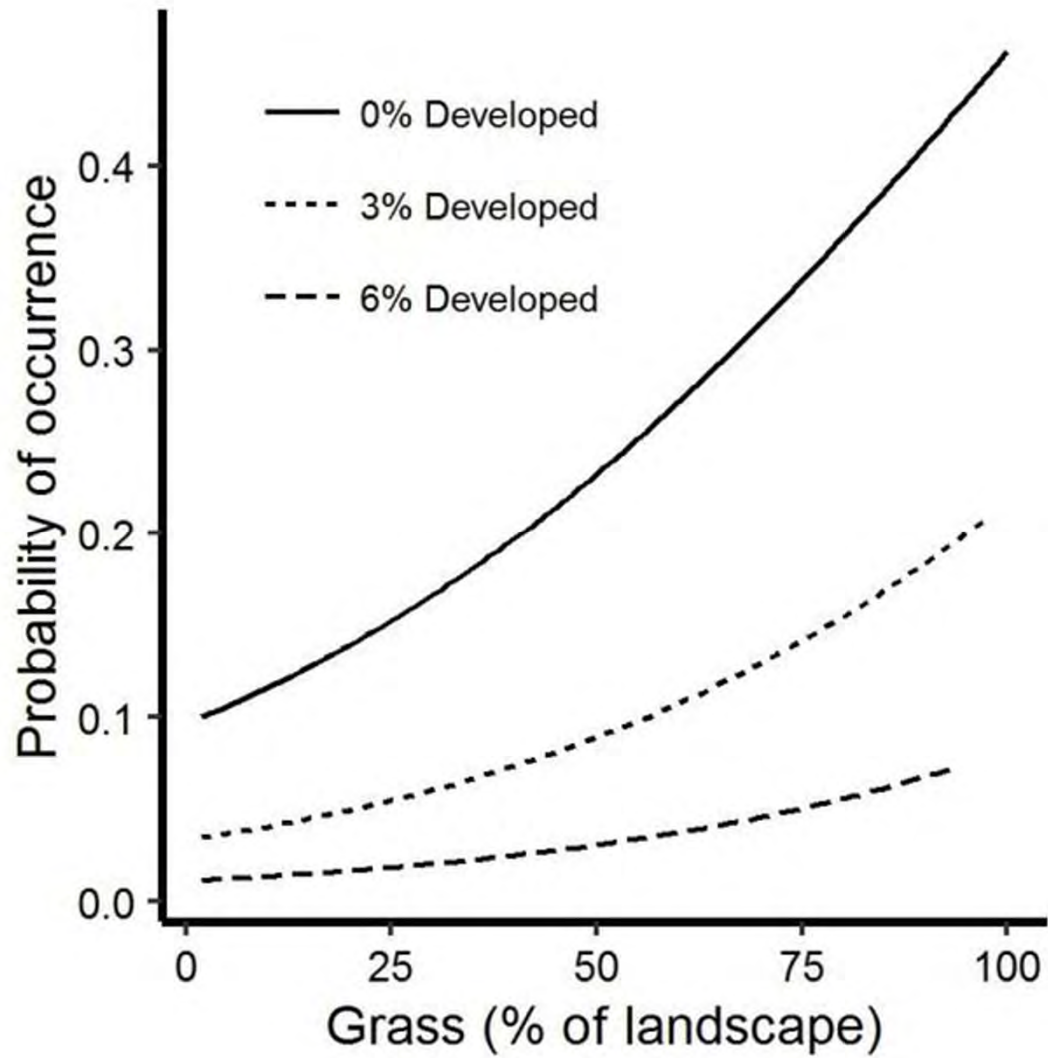
PROGRAM REVIEW AND RECOMMENDATIONS FOR IMPROVED SUCCESS

November 2017

Version 1.0

Recommended Citation:

Belinda, S. R, J. B. Haufler, T.Z. Riley. 2017. Lesser Prairie-Chicken Conservation Assessment: Program Review and Recommendations for Improved Success. North American Grouse Partnership. Red Lodge, Montana.



5 Primary Messages

- Strategic placement of a system of core conservation areas needed
- Better coordinated delivery of LPC conservation into this system needed
- Higher payments for landowners in core areas needed
- More overall funding for LPC conservation needed
- Engagement of all contributing programs using consistent guidelines needed

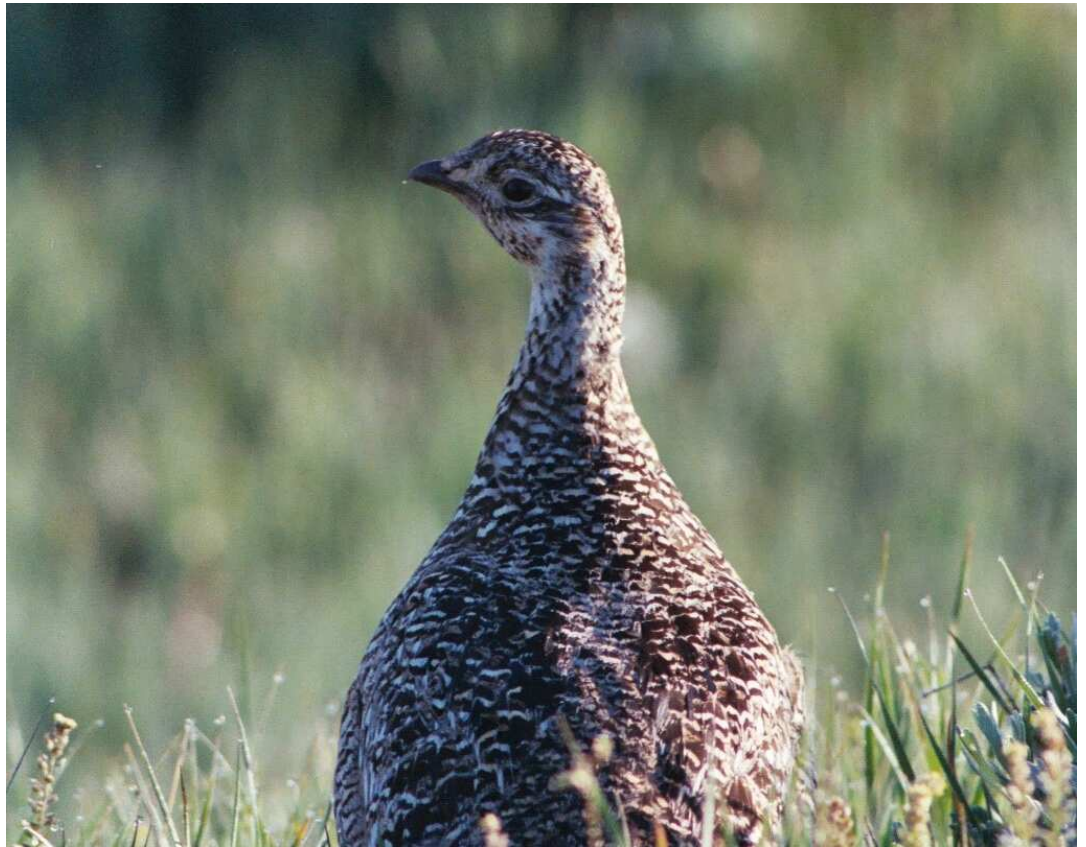
NAGP On-going Role

- Continued evaluation, and assessment of status
- Offer to help convene and facilitate a LPC coordinating group to pull all programs/participants together
- Outreach efforts on status and needs and policy input



NAGP in the Future

- New Executive Director
- Continue our efforts on SG and prairie grouse
- Continue our policy work
- Expand and grow our effectiveness



The North American GROUSE Partnership

ADD YOUR "VOICE" TO GROUSE CONSERVATION

Choose the Level of Grouse Membership
(Includes NAGP decal, newsletter, updates on grouse conservation)

Forest Grouse ☐ \$35 Prairie Chicken ☐ \$250 Sage-Grouse (Life Member) ☐ \$1,000
Sharp-tailed Grouse ☐ \$100 Ptarmigan ☐ \$500

Please provide mailing address and email address to ensure proper and timely communication from NAGP

Name _____ Phone _____
Address _____ Email _____
City, State, Zip _____

Make Checks Payable to, "North American Grouse Partnership" or "NAGP"

Mail completed form to:
North American Grouse Partnership
Attn: Membership
PO Box 717
Seeley Lake, MT 59868

ALL MEMBERSHIP FEES ARE TAX DEDUCTIBLE

THE NORTH AMERICAN GROUSE PARTNERSHIP THANKS YOU FOR YOUR SUPPORT OF GROUSE CONSERVATION!

GROUSE ON!

Questions?

www.grousepartners.org